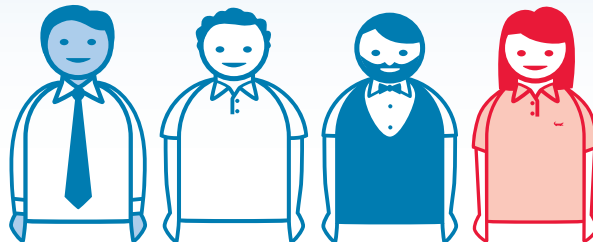


More Women Put in Hours at the Office While More Men Telework

WHERE WORK GETS DONE

31%

of full-time employees do most of their work away from their employer's location such as home, business center or another location.



TELEWORK STEREOTYPES DON'T MATCH REALITY

Nearly **3 out of 4** teleworkers are **men**.

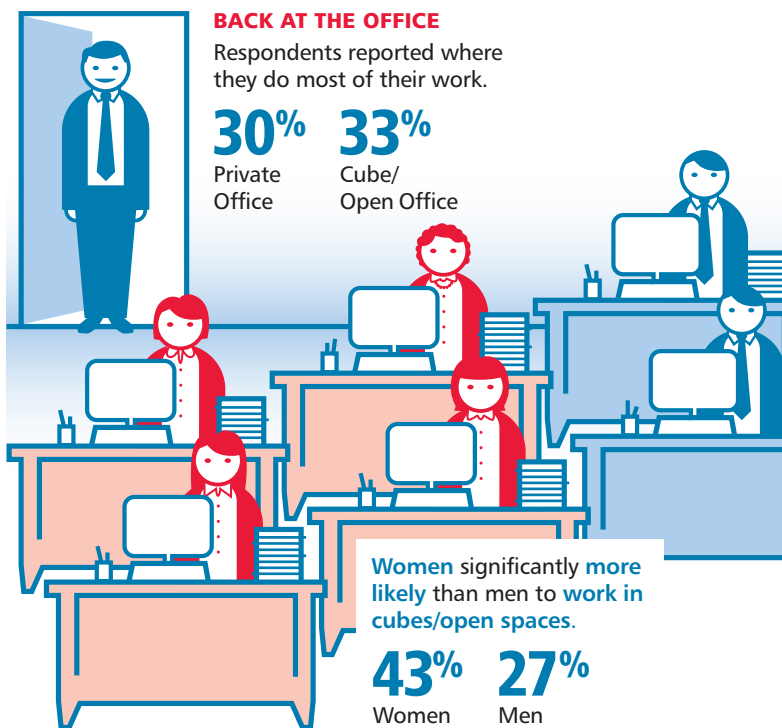
No significant difference between remote workers with or without kids.
No significant difference in the age groups of remote workers.

BACK AT THE OFFICE

Respondents reported where they do most of their work.

30%
Private Office

33%
Cube/
Open Office



Women significantly more likely than men to work in cubes/open spaces.

43% **27%**
Women Men

STRUGGLE WITH WORK LIFE FLEXIBILITY

Among those reporting "I have less work life flexibility now than at this time last year:"

42%
Cube/Open Office Workers

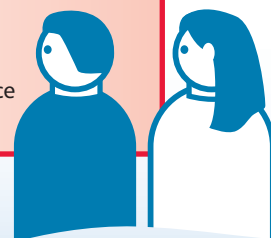
31%
Remote Workers

22%
Private Office Workers



More likely to receive training and guidance to manage work life flexibility.

47% vs 35%
Remote Workers Cube/Open Office Workers



Read the full report at www.worklifefit.com

Findings are based upon a national probability survey of 556 full-time employed adults conducted by ORC International during December 2013. The survey has a margin of error of +/- 4 percent and was made possible with support from Quest Diagnostics, the world's leading provider of diagnostic information services, a premier provider of lab-based employer wellness services, and an award-winning healthy employer of more than 40,000 people. Findings and analysis are solely FSG/WLF's.